



ALEX

.020"(0.5mm) ZIF FPC/FFC Top Entry SMT Type Standard Layout

Specifications:

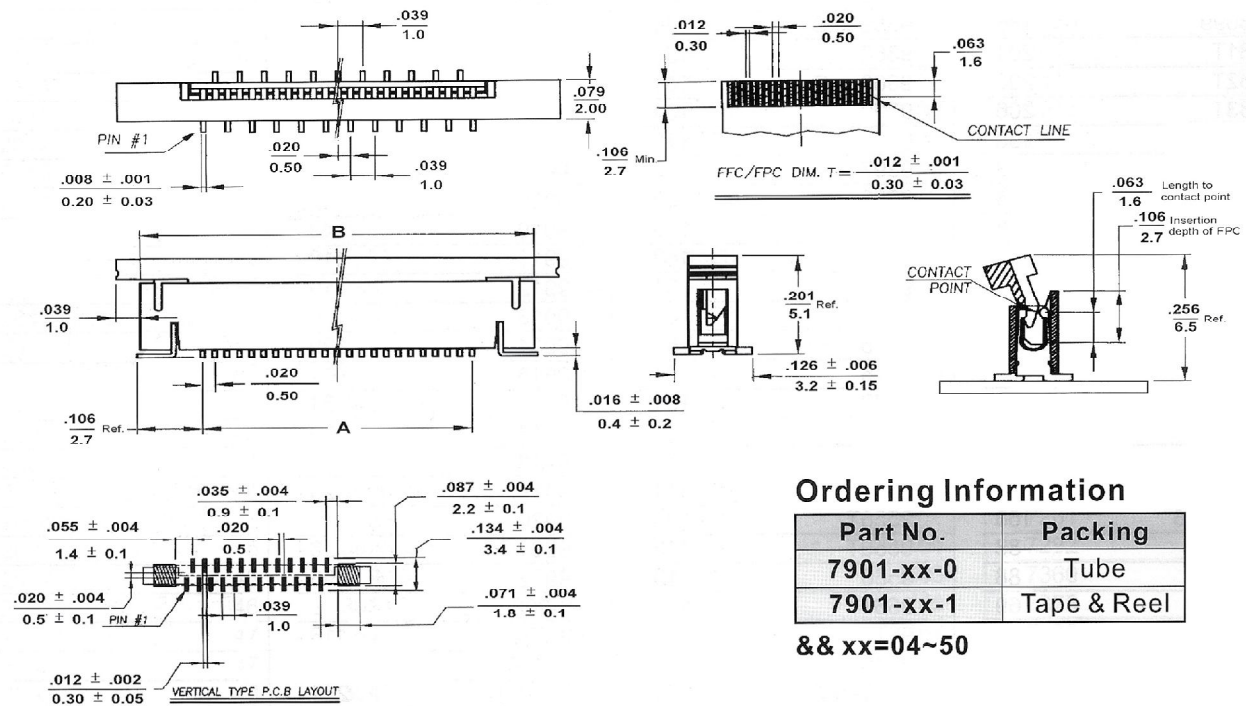
- Current rating: 0.5A
- Voltage rating: 50V DC
- Contact resistance: 30m Ω Max. (at 20mV DC, 100mA Max.)
- Insulation resistance: 100M Ω Min. (at 500V DC)
- Dielectric withstanding voltage: AC 250V/minute (Leak current must be 1mA Max.)
- Temperature range: -30 °C ~ 85 °C

7901-xx Series

Top Entry

inches
mm

- 4~50 circuits available
- Material : Nylon 6T UL 94V-0
- Tin-plated copper alloy
- Slider : PPS UL 94V-0



Ordering Information

Part No.	Packing
7901-xx-0	Tube
7901-xx-1	Tape & Reel

&& xx=04~50

Dimensional Information - in (mm)

Circuits	Dim. A	Dim. B	Circuits	Dim. A	Dim. B	Circuits	Dim. A	Dim. B
4	0.059 (1.5)	0.260 (6.6)	20	0.374 (9.5)	0.575 (14.6)	36	0.689 (17.5)	0.890 (22.6)
5	0.079 (2.0)	0.280 (7.1)	21	0.394 (10.0)	0.594 (15.1)	37	0.709 (18.0)	0.909 (23.1)
6	0.098 (2.5)	0.299 (7.6)	22	0.413 (10.5)	0.614 (15.6)	38	0.728 (18.5)	0.929 (23.6)
7	0.118 (3.0)	0.319 (8.1)	23	0.433 (11.0)	0.634 (16.1)	39	0.748 (19.0)	0.949 (24.1)
8	0.138 (3.5)	0.339 (8.6)	24	0.453 (11.5)	0.654 (16.6)	40	0.768 (19.5)	0.969 (24.6)
9	0.157 (4.0)	0.358 (9.1)	25	0.472 (12.0)	0.673 (17.1)	41	0.787 (20.0)	0.988 (25.1)
10	0.177 (4.5)	0.378 (9.6)	26	0.492 (12.5)	0.693 (17.6)	42	0.807 (20.5)	1.008 (25.6)
11	0.197 (5.0)	0.398 (10.1)	27	0.512 (13.0)	0.713 (18.1)	43	0.827 (21.0)	1.028 (26.1)
12	0.217 (5.5)	0.417 (10.6)	28	0.531 (13.5)	0.732 (18.6)	44	0.846 (21.5)	1.047 (26.6)
13	0.236 (6.0)	0.437 (11.1)	29	0.551 (14.0)	0.752 (19.1)	45	0.866 (22.0)	1.067 (27.1)
14	0.256 (6.5)	0.457 (11.6)	30	0.571 (14.5)	0.772 (19.6)	46	0.886 (22.5)	1.087 (27.6)
15	0.276 (7.0)	0.476 (12.1)	31	0.591 (15.0)	0.791 (20.1)	47	0.906 (23.0)	1.106 (28.1)
16	0.295 (7.5)	0.496 (12.6)	32	0.610 (15.5)	0.811 (20.6)	48	0.925 (23.5)	1.126 (28.6)
17	0.315 (8.0)	0.516 (13.1)	33	0.630 (16.0)	0.831 (21.1)	49	0.945 (24.0)	1.146 (29.1)
18	0.335 (8.5)	0.535 (13.6)	34	0.650 (16.5)	0.850 (21.6)	50	0.965 (24.5)	1.165 (29.6)
19	0.354 (9.0)	0.555 (14.1)	35	0.669 (17.0)	0.870 (22.1)			



ALEX

.020"(0.5mm) ZIF FPC/FFC Top Entry SMT Type Special Layout

Specifications:

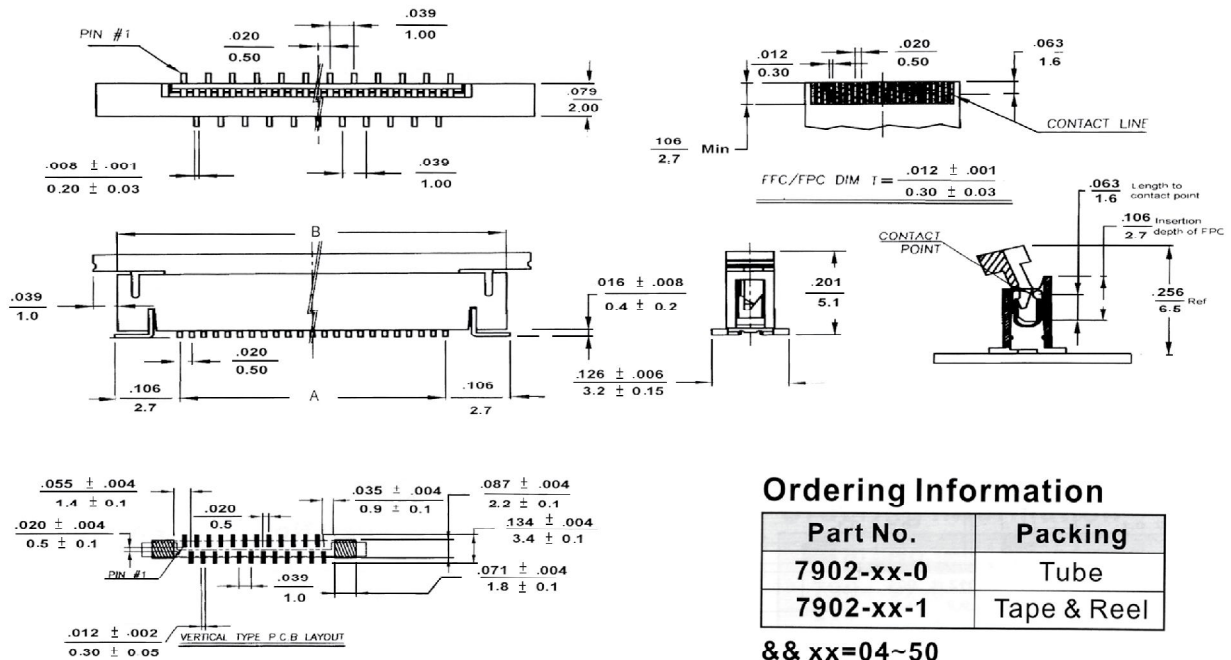
- Current rating: 0.5A
- Voltage rating: 50V DC
- Contact resistance: 30mΩ Max. (at 20mV DC, 100mA Max.)
- Insulation resistance: 100MΩ Min. (at 500V DC)
- Dielectric withstanding voltage: AC 250V/minute (Leak current must be 1mA Max.)
- Temperature range: -30 °C ~ 85°C

7902-xx Series

Top Entry

- 4~50 circuits available
- Material : Nylon 6T UL 94V-0
- Tin-plated copper alloy
- Slider : PPS UL 94V-0

inches
mm



Ordering Information

Part No.	Packing
7902-xx-0	Tube
7902-xx-1	Tape & Reel

&& xx=04~50

Dimensional Information - in (mm)

Circuits	Dim. A	Dim. B	Circuits	Dim. A	Dim. B	Circuits	Dim. A	Dim. B
4	0.059 (1.5)	0.260 (6.6)	20	0.374 (9.5)	0.575 (14.6)	36	0.689 (17.5)	0.890 (22.6)
5	0.079 (2.0)	0.280 (7.1)	21	0.394 (10.0)	0.594 (15.1)	37	0.709 (18.0)	0.909 (23.1)
6	0.098 (2.5)	0.299 (7.6)	22	0.413 (10.5)	0.614 (15.6)	38	0.728 (18.5)	0.929 (23.6)
7	0.118 (3.0)	0.319 (8.1)	23	0.433 (11.0)	0.634 (16.1)	39	0.748 (19.0)	0.949 (24.1)
8	0.138 (3.5)	0.339 (8.6)	24	0.453 (11.5)	0.654 (16.6)	40	0.768 (19.5)	0.969 (24.6)
9	0.157 (4.0)	0.358 (9.1)	25	0.472 (12.0)	0.673 (17.1)	41	0.787 (20.0)	0.988 (25.1)
10	0.177 (4.5)	0.378 (9.6)	26	0.492 (12.5)	0.693 (17.6)	42	0.807 (20.5)	1.008 (25.6)
11	0.197 (5.0)	0.398 (10.1)	27	0.512 (13.0)	0.713 (18.1)	43	0.827 (21.0)	1.028 (26.1)
12	0.217 (5.5)	0.417 (10.6)	28	0.531 (13.5)	0.732 (18.6)	44	0.846 (21.5)	1.047 (26.6)
13	0.236 (6.0)	0.437 (11.1)	29	0.551 (14.0)	0.752 (19.1)	45	0.866 (22.0)	1.067 (27.1)
14	0.256 (6.5)	0.457 (11.6)	30	0.571 (14.5)	0.772 (19.6)	46	0.886 (22.5)	1.087 (27.6)
15	0.276 (7.0)	0.476 (12.1)	31	0.591 (15.0)	0.791 (20.1)	47	0.906 (23.0)	1.106 (28.1)
16	0.295 (7.5)	0.496 (12.6)	32	0.610 (15.5)	0.811 (20.6)	48	0.925 (23.5)	1.126 (28.6)
17	0.315 (8.0)	0.516 (13.1)	33	0.630 (16.0)	0.831 (21.1)	49	0.945 (24.0)	1.146 (29.1)
18	0.335 (8.5)	0.535 (13.6)	34	0.650 (16.5)	0.850 (21.6)	50	0.965 (24.5)	1.165 (29.6)
19	0.354 (9.0)	0.555 (14.1)	35	0.669 (17.0)	0.870 (22.1)			



ALEX

.020"(0.5mm) ZIF FPC/FFC Side Entry Top Contact SMT Type

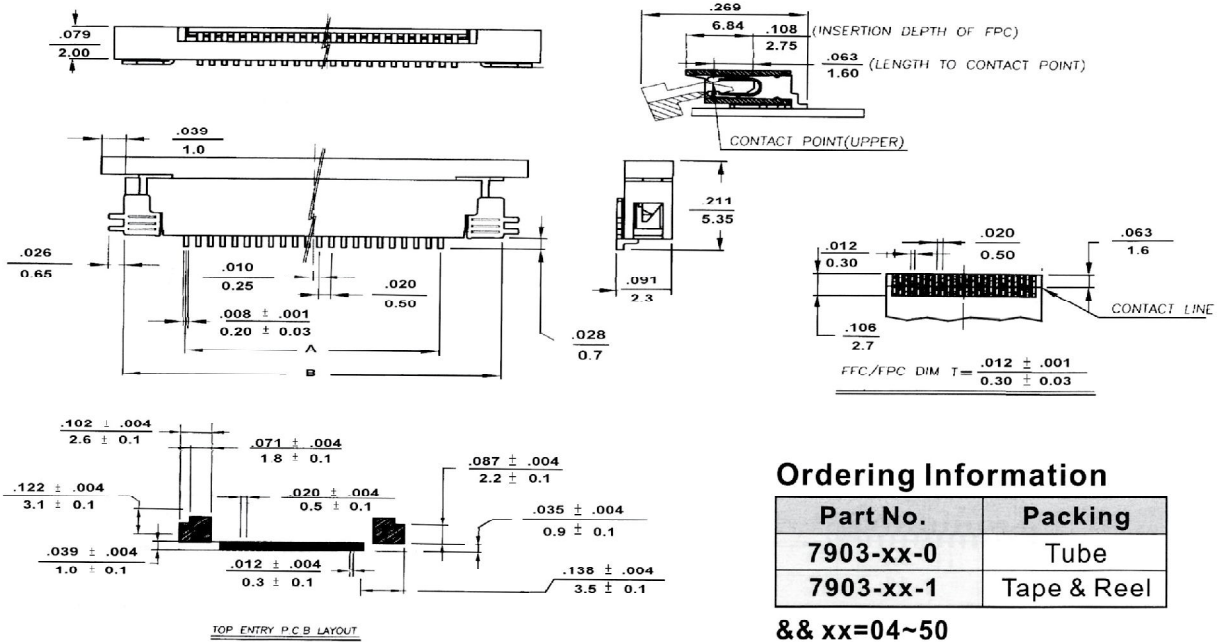
Specifications:

- Current rating: 0.5A
- Voltage rating: 50V DC
- Contact resistance: 30mΩ Max. (at 20mV DC, 100mA Max.)
- Insulation resistance: 100MΩ Min. (at 500V DC)
- Dielectric withstanding voltage: AC 250V/minute (Leak current must be 1mA Max.)
- Temperature range: -30 °C ~ 85 °C

7903-xx Series Side Entry

inches
mm

- 4~50 circuits available
- Material : Nylon 6T UL 94V-0
- Tin-plated copper alloy
- Slider : PPS UL 94V-0



Ordering Information

Part No.	Packing
7903-xx-0	Tube
7903-xx-1	Tape & Reel

&& xx=04~50

Dimensional Information - in (mm)

Circuits	Dim. A	Dim. B	Circuits	Dim. A	Dim. B	Circuits	Dim. A	Dim. B
4	0.059 (1.5)	0.260 (6.6)	20	0.374 (9.5)	0.575 (14.6)	36	0.689 (17.5)	0.890 (22.6)
5	0.079 (2.0)	0.280 (7.1)	21	0.394 (10.0)	0.594 (15.1)	37	0.709 (18.0)	0.909 (23.1)
6	0.098 (2.5)	0.299 (7.6)	22	0.413 (10.5)	0.614 (15.6)	38	0.728 (18.5)	0.929 (23.6)
7	0.118 (3.0)	0.319 (8.1)	23	0.433 (11.0)	0.634 (16.1)	39	0.748 (19.0)	0.949 (24.1)
8	0.138 (3.5)	0.339 (8.6)	24	0.453 (11.5)	0.654 (16.6)	40	0.768 (19.5)	0.969 (24.6)
9	0.157 (4.0)	0.358 (9.1)	25	0.472 (12.0)	0.673 (17.1)	41	0.787 (20.0)	0.988 (25.1)
10	0.177 (4.5)	0.378 (9.6)	26	0.492 (12.5)	0.693 (17.6)	42	0.807 (20.5)	1.008 (25.6)
11	0.197 (5.0)	0.398 (10.1)	27	0.512 (13.0)	0.713 (18.1)	43	0.827 (21.0)	1.028 (26.1)
12	0.217 (5.5)	0.417 (10.6)	28	0.531 (13.5)	0.732 (18.6)	44	0.846 (21.5)	1.047 (26.6)
13	0.236 (6.0)	0.437 (11.1)	29	0.551 (14.0)	0.752 (19.1)	45	0.866 (22.0)	1.067 (27.1)
14	0.256 (6.5)	0.457 (11.6)	30	0.571 (14.5)	0.772 (19.6)	46	0.886 (22.5)	1.087 (27.6)
15	0.276 (7.0)	0.476 (12.1)	31	0.591 (15.0)	0.791 (20.1)	47	0.906 (23.0)	1.106 (28.1)
16	0.295 (7.5)	0.496 (12.6)	32	0.610 (15.5)	0.811 (20.6)	48	0.925 (23.5)	1.126 (28.6)
17	0.315 (8.0)	0.516 (13.1)	33	0.630 (16.0)	0.831 (21.1)	49	0.945 (24.0)	1.146 (29.1)
18	0.335 (8.5)	0.535 (13.6)	34	0.650 (16.5)	0.850 (21.6)	50	0.965 (24.5)	1.165 (29.6)
19	0.354 (9.0)	0.555 (14.1)	35	0.669 (17.0)	0.870 (22.1)			



ALEX

.020"(0.5mm) ZIF FPC/FFC Side Entry Bottom Contact SMT Type

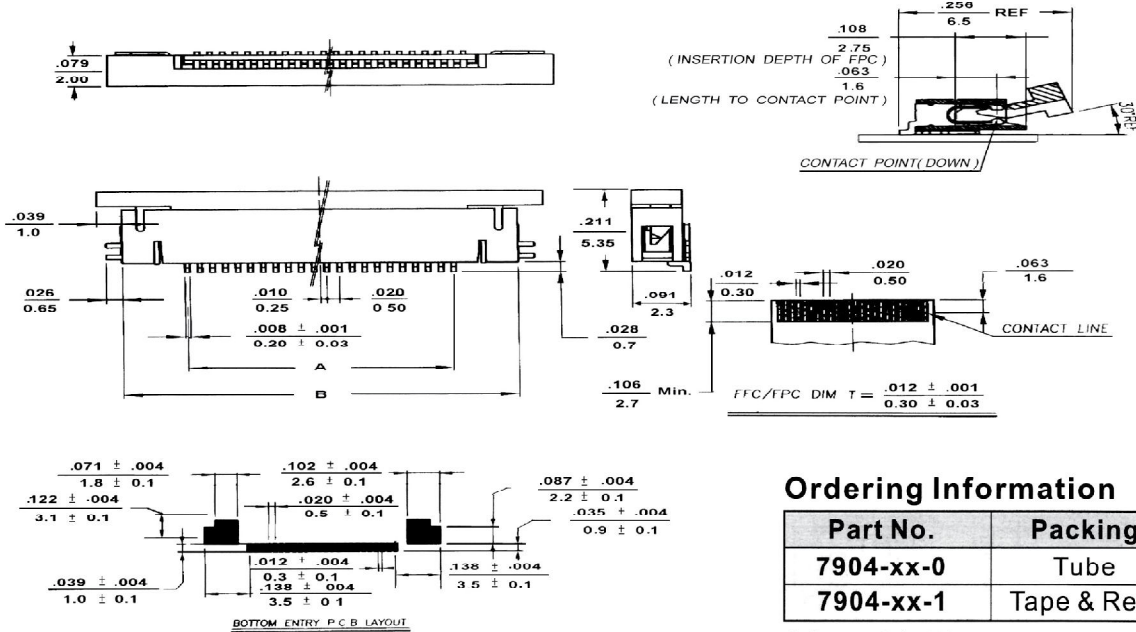
Specifications:

- Current rating: 0.5A
- Voltage rating: 50V DC
- Contact resistance: 30m Ω Max. (at 20mV DC, 100mA Max.)
- Insulation resistance: 100M Ω Min. (at 500V DC)
- Dielectric withstanding voltage: AC 250V/minute (Leak current must be 1mA Max.)
- Temperature range: -30 °C ~ 85 °C

7904-xx Series Side Entry

inches
mm

- 4~50 circuits available
- Material : Nylon 6T UL 94V-0
- Tin-plated copper alloy
- Slider : PPS UL 94V-0



Ordering Information

Part No.	Packing
7904-xx-0	Tube
7904-xx-1	Tape & Reel

&& xx=04~50

Dimensional Information - in (mm)

Circuits	Dim. A	Dim. B	Circuits	Dim. A	Dim. B	Circuits	Dim. A	Dim. B
4	0.059 (1.5)	0.260 (6.6)	20	0.374 (9.5)	0.575 (14.6)	36	0.689 (17.5)	0.890 (22.6)
5	0.079 (2.0)	0.280 (7.1)	21	0.394 (10.0)	0.594 (15.1)	37	0.709 (18.0)	0.909 (23.1)
6	0.098 (2.5)	0.299 (7.6)	22	0.413 (10.5)	0.614 (15.6)	38	0.728 (18.5)	0.929 (23.6)
7	0.118 (3.0)	0.319 (8.1)	23	0.433 (11.0)	0.634 (16.1)	39	0.748 (19.0)	0.949 (24.1)
8	0.138 (3.5)	0.339 (8.6)	24	0.453 (11.5)	0.654 (16.6)	40	0.768 (19.5)	0.969 (24.6)
9	0.157 (4.0)	0.358 (9.1)	25	0.472 (12.0)	0.673 (17.1)	41	0.787 (20.0)	0.988 (25.1)
10	0.177 (4.5)	0.378 (9.6)	26	0.492 (12.5)	0.693 (17.6)	42	0.807 (20.5)	1.008 (25.6)
11	0.197 (5.0)	0.398 (10.1)	27	0.512 (13.0)	0.713 (18.1)	43	0.827 (21.0)	1.028 (26.1)
12	0.217 (5.5)	0.417 (10.6)	28	0.531 (13.5)	0.732 (18.6)	44	0.846 (21.5)	1.047 (26.6)
13	0.236 (6.0)	0.437 (11.1)	29	0.551 (14.0)	0.752 (19.1)	45	0.866 (22.0)	1.067 (27.1)
14	0.256 (6.5)	0.457 (11.6)	30	0.571 (14.5)	0.772 (19.6)	46	0.886 (22.5)	1.087 (27.6)
15	0.276 (7.0)	0.476 (12.1)	31	0.591 (15.0)	0.791 (20.1)	47	0.906 (23.0)	1.106 (28.1)
16	0.295 (7.5)	0.496 (12.6)	32	0.610 (15.5)	0.811 (20.6)	48	0.925 (23.5)	1.126 (28.6)
17	0.315 (8.0)	0.516 (13.1)	33	0.630 (16.0)	0.831 (21.1)	49	0.945 (24.0)	1.146 (29.1)
18	0.335 (8.5)	0.535 (13.6)	34	0.650 (16.5)	0.850 (21.6)	50	0.965 (24.5)	1.165 (29.6)
19	0.354 (9.0)	0.555 (14.1)	35	0.669 (17.0)	0.870 (22.1)			