



.049"(1.25mm) Pitch Wire-to-Board Connector

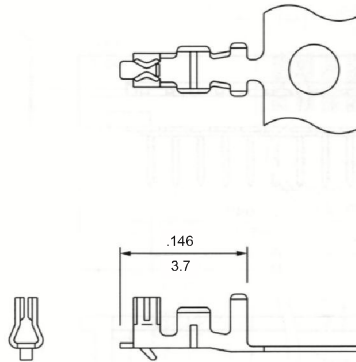
Specifications:

- Current rating: 1A
- Voltage rating: 100V AC, DC
- Dielectric withstanding voltage: 500V AC/minute
- Insulation resistance: 500MΩ min.
- Contact resistance: 20mΩ max.
- Ambient temperature range: -25 °C ~ 85 °C (including temperature rise)
- UL file No. : E114003

9811T Series Crimp Terminal

inches
mm

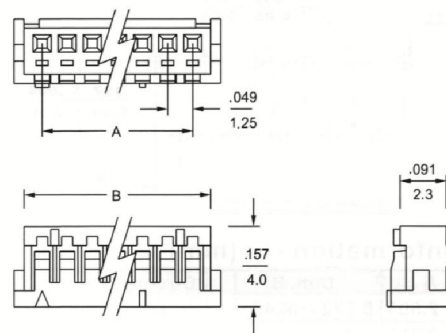
- Material: Phosphor bronze
- Finished: Tin-plated
- Used in ALEX 9812-N, 9815-N series housings
- Wire range: AWG #28 ~ #32
- Thickness: 0.15mm



9812-N Series Single Row Housing

inches
mm

- 2 ~ 15 circuits available
- Material: Nylon 66, UL 94V-0
- Accepts ALEX 9811T terminal
- Mates with ALEX 9813-N, 9814-N headers



Dimensional Information - in (mm)

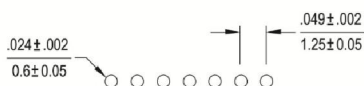
| Circuits | Dim. A | Dim. B | Circuits | Dim. A | Dim. B | Circuits | Dim. A | Dim. B |
|----------|---------------|---------------|----------|---------------|---------------|----------|---------------|---------------|
| 2 | 0.049 (1.25) | 0.120 (3.05) | 7 | 0.295 (7.50) | 0.366 (9.30) | 12 | 0.541 (13.75) | 0.612 (15.55) |
| 3 | 0.098 (2.50) | 0.169 (4.30) | 8 | 0.344 (8.75) | 0.415 (10.55) | 13 | 0.591 (15.00) | 0.661 (16.80) |
| 4 | 0.148 (3.75) | 0.219 (5.55) | 9 | 0.394 (10.00) | 0.465 (11.80) | 14 | 0.640 (16.25) | 0.711 (18.05) |
| 5 | 0.197 (5.00) | 0.268 (6.80) | 10 | 0.443 (11.25) | 0.514 (13.05) | 15 | 0.689 (17.50) | 0.768 (19.50) |
| 6 | 0.246 (6.25) | 0.317 (8.05) | 11 | 0.492 (12.50) | 0.563 (14.30) | | | |



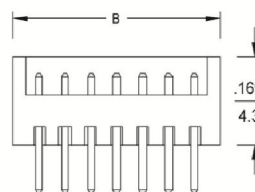
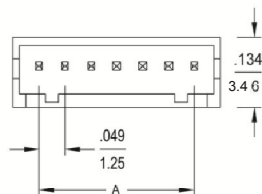
.049"(1.25mm) Pitch Wire-to-Board Connector

9813-N Series Single Row Vertical Header

- 2 ~ 15 circuits available
- Material: Nylon 66, UL 94V-0
- Tin-plated brass pin
- .014"(0.35mm) square pin
- Mates with ALEX 9812-N housing



P. C. board hole dimensions



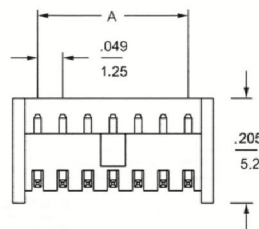
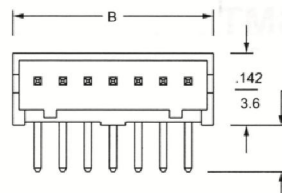
inches
mm

9814-N Series Single Row Right Angle Header

- 2 ~ 15 circuits available
- Material: Nylon 66, UL 94V-0
- Tin-plated brass pin
- .014"(0.35mm) square pin
- Mates with ALEX 9812-N housing



P. C. board hole dimensions



inches
mm

Dimensional Information - in (mm) 9813 / 9814

| Circuits | Dim. A | Dim. B | Circuits | Dim. A | Dim. B | Circuits | Dim. A | Dim. B |
|----------|---------------|---------------|----------|---------------|---------------|----------|---------------|---------------|
| 2 | 0.049 (1.25) | 0.148 (3.75) | 7 | 0.295 (7.50) | 0.394 (10.00) | 12 | 0.541 (13.75) | 0.640 (16.25) |
| 3 | 0.098 (2.50) | 0.197 (5.00) | 8 | 0.344 (8.75) | 0.443 (11.25) | 13 | 0.591 (15.00) | 0.689 (17.50) |
| 4 | 0.148 (3.75) | 0.246 (6.25) | 9 | 0.394 (10.00) | 0.492 (12.50) | 14 | 0.640 (16.25) | 0.738 (18.75) |
| 5 | 0.197 (5.00) | 0.295 (7.50) | 10 | 0.443 (11.25) | 0.541 (13.75) | 15 | 0.689 (17.50) | 0.787 (20.00) |
| 6 | 0.246 (6.25) | 0.344 (8.75) | 11 | 0.492 (12.50) | 0.591 (15.00) | | | |