



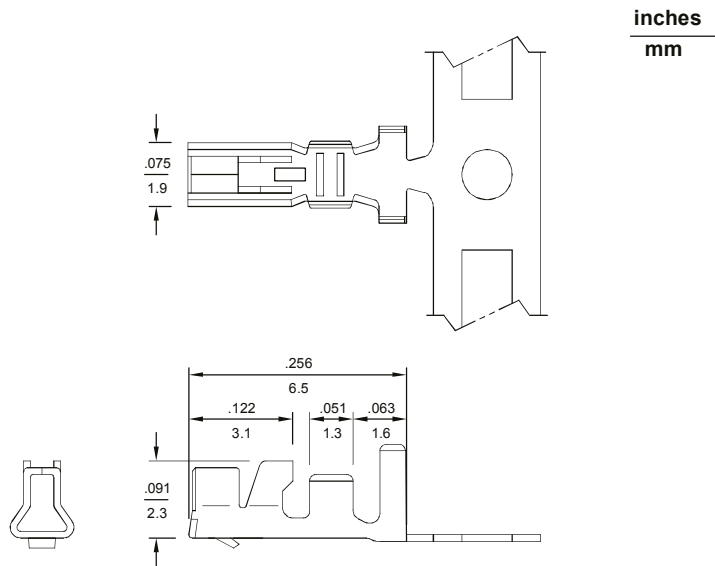
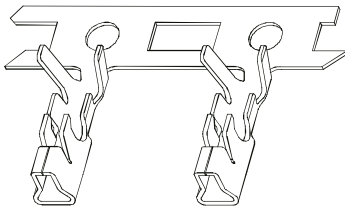
.098" (2.5mm) Wire-to-Board Crimp Terminal Housing

Specifications:

- Current rating: 3A AC, DC (#20, #22 AWG)
- Voltage rating: 250V AC, DC
- Contact resistance: Initial value/10mΩ Max.
After environmental testing/20mΩ Max.
- Insulation resistance: 1000MΩ Min.
- Withstanding voltage: 1000V AC/minute
- Temperature range: -25°C ~ 85°C
(including temperature rise in applying electrical current)
- Applicable P. C. board thickness: .063" (1.6mm)

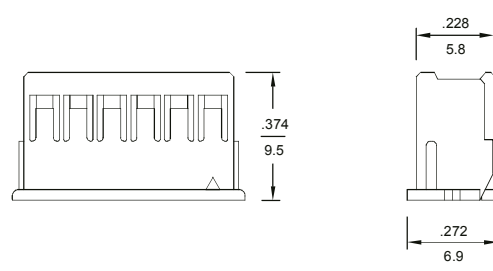
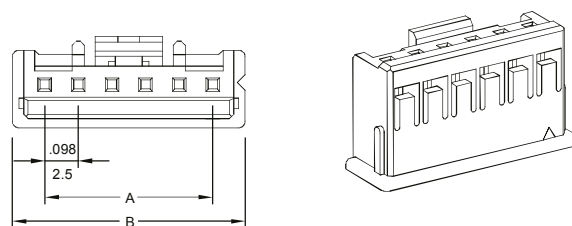
2551T Crimp Terminal

- Material: Phosphor bronze
- Finished: Tin-plated
- Used in ALEX 2552-N housing
- Wire range: AWG #20 ~ #28
- Thickness: 0.2mm



2552-N Series Crimp Terminal Housing

- 2 ~ 15, 20 circuits available
- Material: UL 94V-0 nylon 66
- Accepts ALEX 2551T terminal
- Mates with ALEX 2553-xx, 2554-xx headers
- Color: White



Dimensional Information (mm)

Circuits	Dim. A	Dim. B
N	2.5 x (N - 1)	A + 4.8

&& N = 2 ~ 15, 20



ALEX

.098"(2.5mm) Wire-to-Board Crimp Terminal Housing

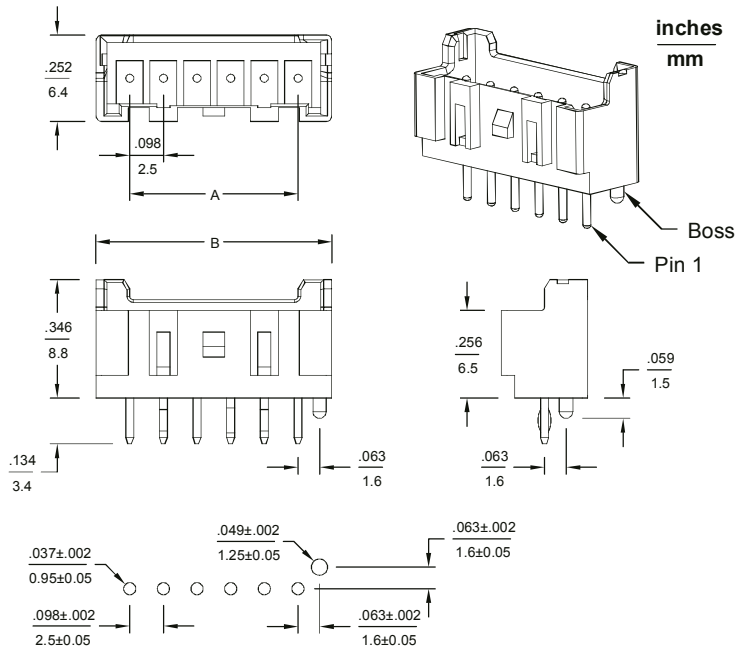
2553-xx Series Vertical Header

- 2 ~ 15 circuits available
- Material: Glass-filled PA 66, UL 94V-0
- Tin-plated brass pin
- .024"(0.6mm) round pin
- Mates with ALEX 2552-N housing
- Color: Nature

Ordering Information

Part No.	Feature
2553-xx	Without a boss
2553-xxP	With a boss

&& xx = 2 ~ 15



P. C. board hole dimensions

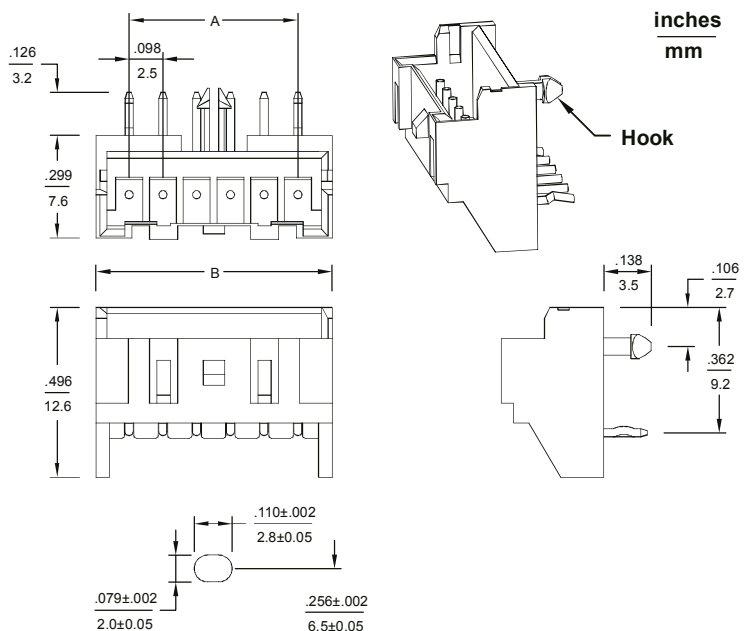
2554-xx Series Right Angle Header

- 2 ~ 15 circuits available
- Material: Glass-filled PA 66, UL 94V-0
- Tin-plated brass pin
- .024"(0.6mm) round pin
- Mates with ALEX 2552-N housing
- Color: Nature

Ordering Information

Part No.	Feature
2554-xx	Without a hook
2554-xxP	With a hook

&& xx = 2 ~ 15



P. C. board hole dimensions

Dimensional Information (mm)

Circuits	Dim. A	Dim. B
N	2.5 x (N - 1)	A + 5

&& N = 2 ~ 15