

**ALEX**

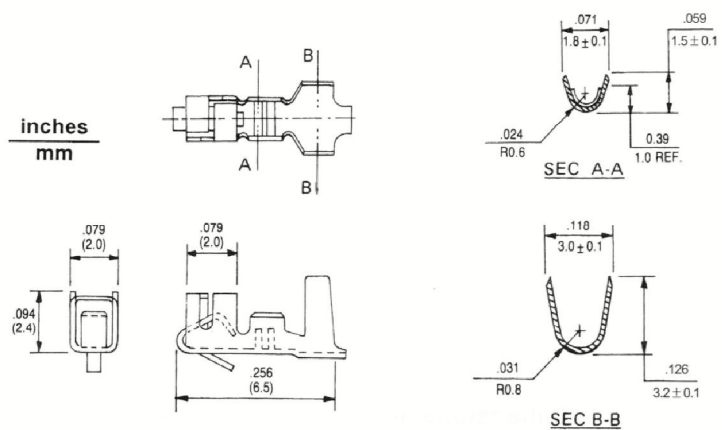
.098" (2.5 mm) Center Low-Profile Crimp Terminal Housings

Specifications

- Current rating: 3A AC, DC
- Voltage rating: 250V AC, DC
- Temperature range: $-25^{\circ}\text{C} \sim +85^{\circ}\text{C}$
(including temperature rise)
- Contact resistance: Initial value/10m Ω max.
After environmental testing/20m Ω max.
- Insulation resistance: 1,000M Ω min.
- Withstand voltage: 1,000 AC/minute
- Applicable wires: AWG #28 ~ #22
- Applicable PC board thickness: .063" (1.6mm)
- UL File No. : E114003

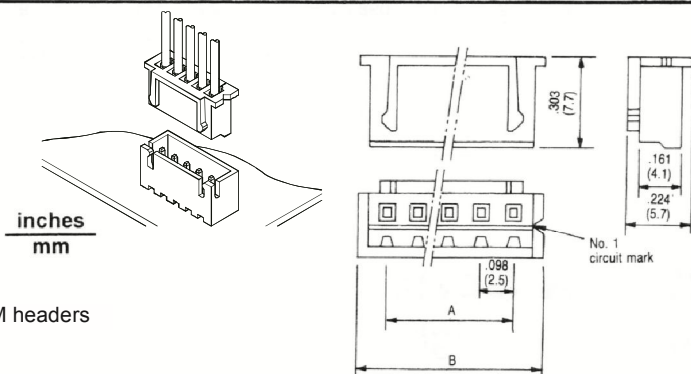
8820T Series Crimp Terminals

- Used in Alex 8821 series housing
- Accepts # 22 to 28 AWG wire
- Material: Tin plated phosphor bronze
- Plating options available



8821-N Series Polarizing Housings

- Accepts 8820T terminal
- 94V-0 Nylon
- Molded friction lock
- 2-20 Circuits available
- Optional polarization or locking ramp version
- Mates with ALEX 8822, 8823, 8822-xxSM, 8823-xxSM headers



Dimensional Information -in. (mm)

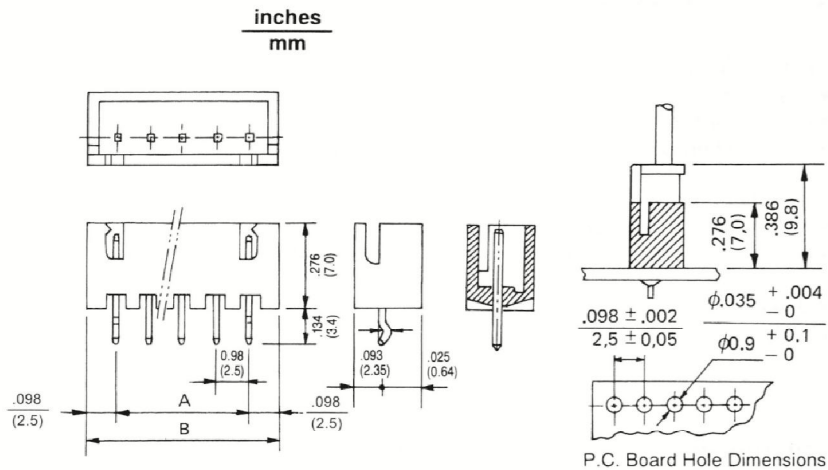
Circuits	Dim. A	Dim. B	Circuits	Dim. A	Dim. B	Circuits	Dim. A	Dim. B
2	0.098 (2.5)	0.287 (7.3)	9	0.787 (20.0)	0.976 (24.8)	16	1.477 (37.5)	1.665 (42.3)
3	0.197 (5.0)	0.386 (9.8)	10	0.886 (22.5)	1.075 (27.3)	17	1.575 (40.0)	1.764 (44.8)
4	0.295 (7.5)	0.484 (12.3)	11	0.984 (25.0)	1.173 (29.8)	18	1.674 (42.5)	1.862 (47.3)
5	0.394 (10.0)	0.583 (14.8)	12	1.083 (27.5)	1.272 (32.3)	19	1.772 (45.0)	1.961 (49.8)
6	0.492 (12.5)	0.681 (17.3)	13	1.181 (30.0)	1.370 (34.8)	20	1.870 (47.5)	2.059 (52.3)
7	0.591 (15.0)	0.780 (19.8)	14	1.280 (32.5)	1.469 (37.3)			
8	0.689 (17.5)	0.878 (22.3)	15	1.378 (35.0)	1.567 (39.8)			

.098" (2.5 mm) Center Headers

8822-N Series

Straight Pin Friction Lock Header

- 2-20 Circuits available
- .025" (0,64mm) straight square wire pins
- Friction lock
- 94V-0 Nylon
- Mates with 8821 housing
- Tin plated brass pins. Plating options available
- Applicable PC board thickness .063" (1.6mm)



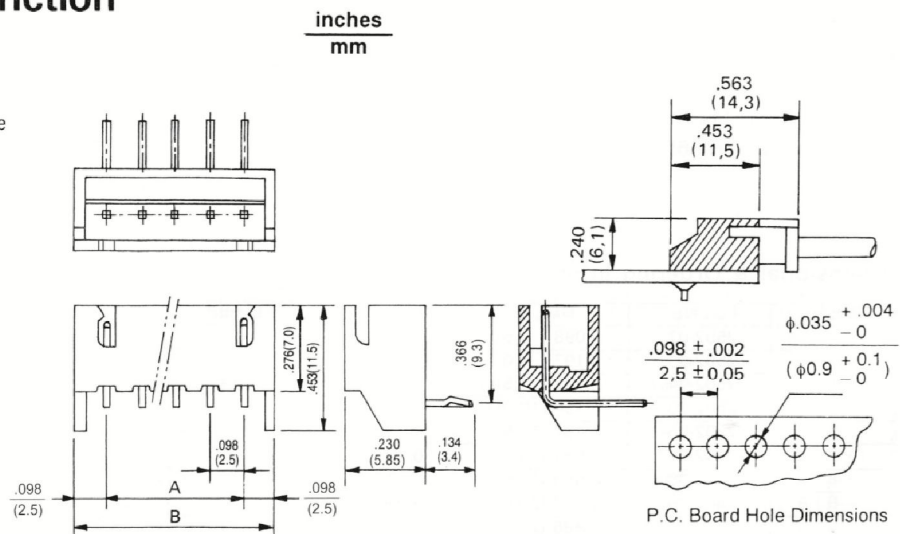
Dimensional Information - in. (mm) 8822 / 8823

Circuits	Dim. A	Dim. B	Circuits	Dim. A	Dim. B	Circuits	Dim. A	Dim. B
2	.098 (2.5)	.295 (7.5)	9	.787 (20.0)	.984 (25.0)	16	1.480 (37.50)	1.680 (42.5)
3	.197 (5.0)	.394 (10.0)	10	.886 (22.5)	1.083 (27.5)	17	1.578 (40.00)	1.778 (45.0)
4	.295 (7.5)	.492 (12.5)	11	.984 (25.0)	1.181 (30.0)	18	1.680 (42.50)	1.880 (47.5)
5	.394 (10.0)	.591 (15.0)	12	1.083 (27.5)	1.280 (32.5)	19	1.778 (45.00)	1.969 (50.0)
6	.492 (12.5)	.689 (17.5)	13	1.181 (30.0)	1.378 (35.0)	20	1.880 (47.50)	2.067 (52.5)
7	.591 (15.0)	.787 (20.0)	14	1.280 (32.5)	1.480 (37.5)			
8	.689 (17.5)	.886 (22.5)	15	1.378 (35.0)	1.578 (40.0)			

8823-N Series

Right Angle Pin Friction Lock Header

- 2-20 Circuits available
- .025" (0,64mm) right angle square wire pins
- Friction lock
- 94V-0 Nylon
- Mates with 8821 housing
- Tin plated brass pins. Plating options available
- Applicable PC board thickness .063" (1.6mm)

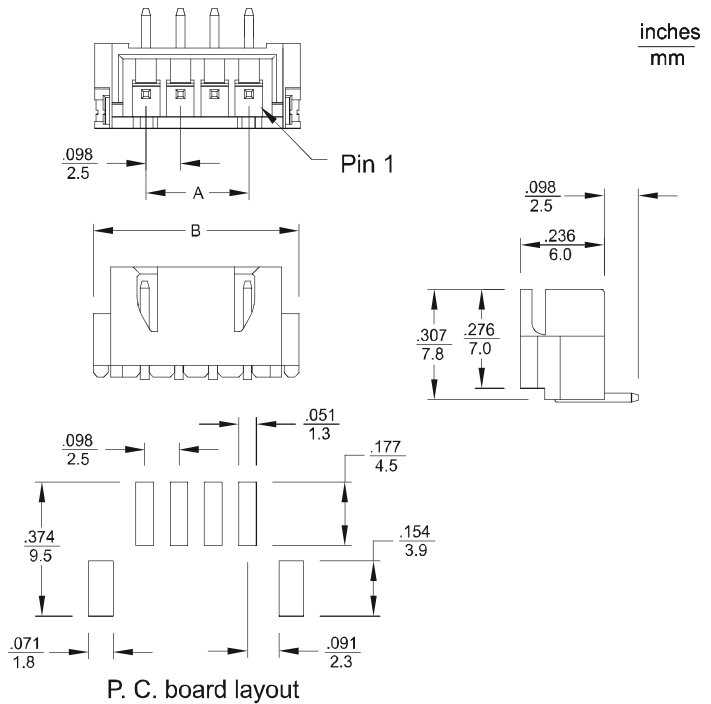


**ALEX**

.098"(2.5mm) Center Header

8822-xxSM Series Vertical Header, SMT

- 2 ~ 16 circuits available
- Plastic material: LCP
- Tin-plated brass pin
- .025"(0.64mm) square pin
- Mates with ALEX 8821-N housing
- Molded friction lock
- Color: Natural



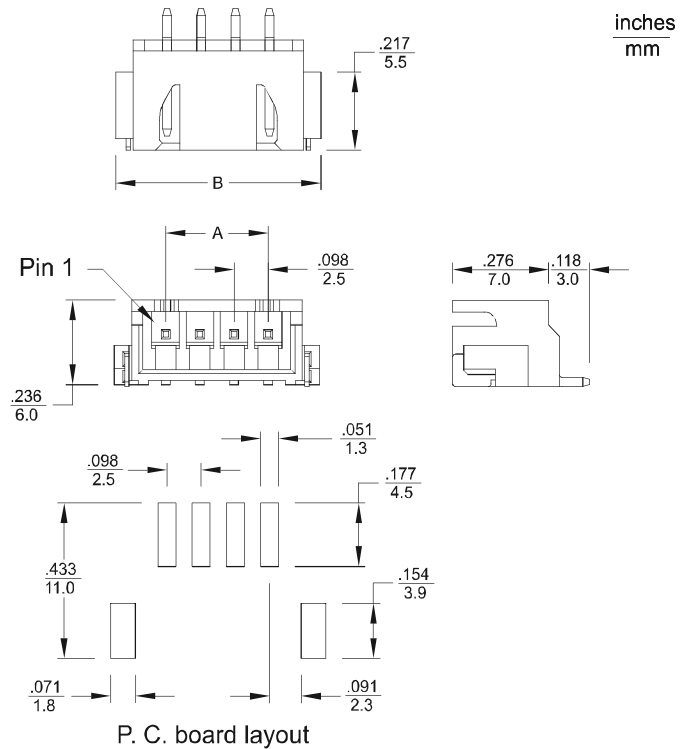
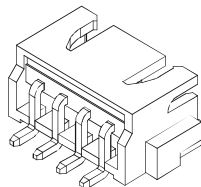
Dimensional Information (mm)

Circuits	Dim. A	Dim. B
N	2.5 x (N - 1)	2.5 x (N + 2)

&& N = 2 ~ 16

8823-xxSM Series Right Angle Header, SMT

- 2 ~ 16 circuits available
- Plastic material: LCP
- Tin-plated brass pin
- .025"(0.64mm) square pin
- Mates with ALEX 8821-N housing
- Molded friction lock
- Color: Natural



Dimensional Information (mm)

Circuits	Dim. A	Dim. B
N	2.5 x (N - 1)	2.5 x (N + 2)

&& N = 2 ~ 20