

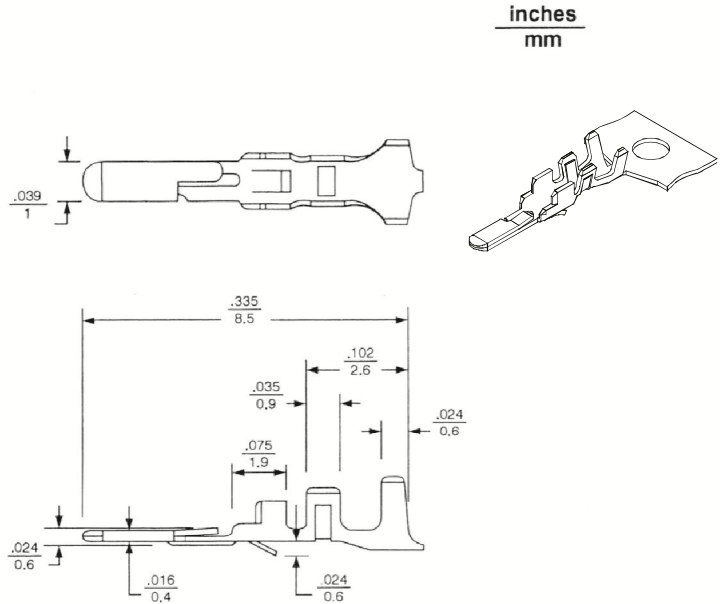
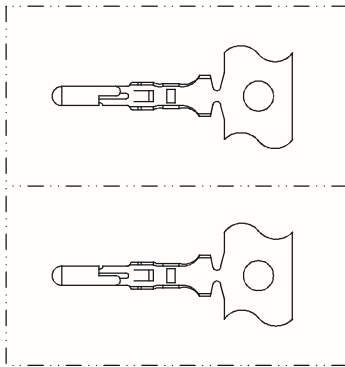


ALEX

.079" (2.0mm) Center Wire-to-Wire System

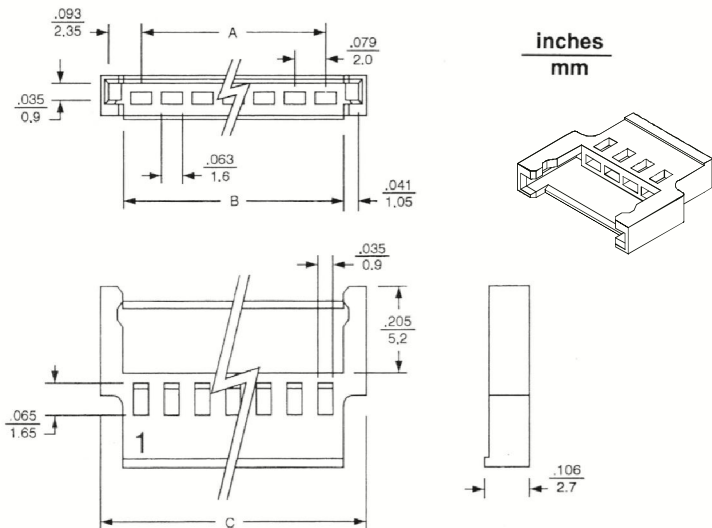
9512T Series Male Crimp Terminal

- Low profile
- Tin plated phos. bronze
- Used in Alex 9516 series housing
- Wire range: AWG #24 ~ 28
- Insulation diameter: ϕ 1.15 mm max.
- Strip length: 1.7 ~ 2.3mm
- UL File No.: E114003



9516 - N Series Plug Housing

- 2 ~ 10 Circuits available
- Wire to wire application
- Low profile
- PBT , UL 94V-0
- Accepts Alex 9512T terminal
- Mate with Alex 9515 series housing
- UL File No.: E114003



Dimensional Information - in (mm)

Circuits	Dim. A	Dim. B	Dim. C	Circuits	Dim. A	Dim. B	Dim. C
2	.079 (2.0)	.181 (4.6)	.315 (8)	7	.472 (12.0)	.575 (14.6)	.709 (18)
3	.157 (4.0)	.260 (6.6)	.394 (10)	8	.551 (14.0)	.654 (16.6)	.787 (20)
4	.236 (6.0)	.339 (8.6)	.472 (12)	9	.630 (16.0)	.732 (18.6)	.866 (22)
5	.315 (8.0)	.417 (10.6)	.551 (14)	10	.709 (18.0)	.811 (20.6)	.945 (24)
6	.394 (10.0)	.496 (12.6)	.630 (16)				



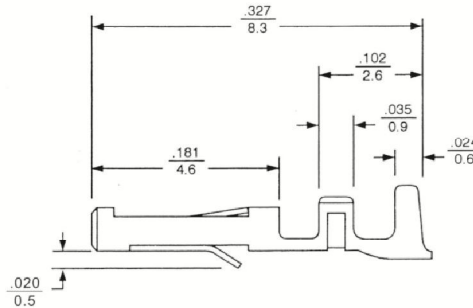
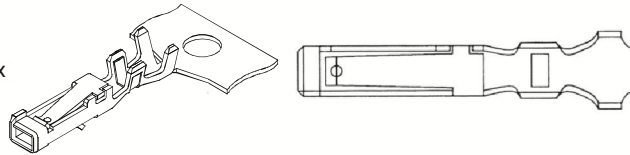
ALEX

.079" (2.0mm) Center Wire-to-Wire System

9513T Series Female Crimp Terminal

inches
mm

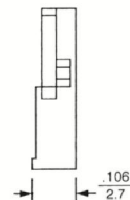
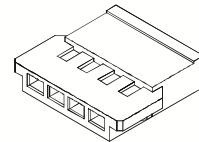
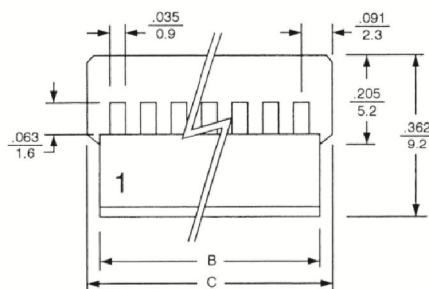
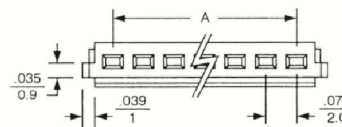
- Low profile
- Tin plated phos. bronze
- Used in Alex 9515 series housing
- Wire range: AWG #24 ~ 28
- Insulation diameter: ϕ 1.15 mm max
- Strip length: 1.7 ~ 2.3mm
- UL File No.: E114003



9515 - N Series Receptacle Housing

inches
mm

- 2 - 10 Circuits available
- Wire to wire application
- Low profile
- PBT, UL 94V-0
- Accepts Alex 9513T terminal
- Mate with Alex 9516 series housing
- UL File No.: E114003



Dimensional Information - in (mm)

Circuits	Dim. A	Dim. B	Dim. C	Circuits	Dim. A	Dim. B	Dim. C
2	.079 (2.0)	.177(4.5)	.256(6.5)	7	.472 (12.0)	.571(14.5)	.650(16.5)
3	.157 (4.0)	.256(6.5)	.335(8.5)	8	.551 (14.0)	.650(16.5)	.728(18.5)
4	.236 (6.0)	.335(8.5)	.413(10.5)	9	.630 (16.0)	.728(18.5)	.807(20.5)
5	.315 (8.0)	.413(10.5)	.492(12.5)	10	.709 (18.0)	.807(20.5)	.886(22.5)
6	.394 (10.0)	.492(12.5)	.571(14.5)				