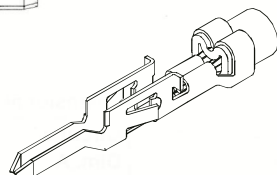
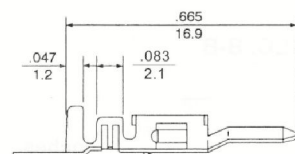
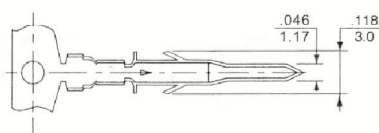


**ALEX**

# High Current/High Density Power Connector System

The power Connector series is designed for high current / high density applications which require the design flexibility of wire to wire and wire to board configurations in the interconnection system. The power connector system is appropriate for both power and signal applications as it can carry currents of up to 9 amperes per circuit.

## 4257T Series Crimp Terminal



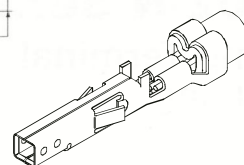
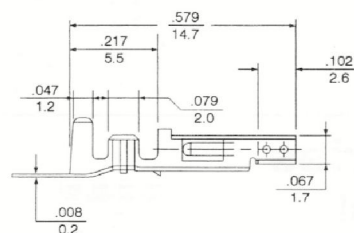
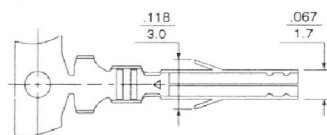
### Specifications:

#### ● Electrical:

Voltage Rating: 600V (R.M.S.)  
Contact Resistance: 10mΩ max.  
Dielectric strength: 1500V AC

- UL File No. : E114003
- CSA File No. : LR86545

## 4256T Series Crimp Terminal



inches  
mm

#### ● Mechanical:

Temperature Rise: (Carrying rated current load) 30°C max.

### Ordering & Dimensional Information:

Part No.	Wire Size (AWG)	Max. Ins. Dia. (mm)	Material	Thickness (mm)	Finish	Chain Type
4256T1	#22 ~ #28	1.8	Brass	0.2	Tin-plated	End Chain
4256T2	#18 ~ #24	3.1				
4256T3	#16					
4256TP1	#22 ~ #28	1.8	Phosphor Bronze			
4256TP2	#18 ~ #24	3.1				
4256TP3	#16					
4257T1	#22 ~ #28	1.8	Brass			
4257T2	#18 ~ #24	3.1				
4257T3	#16					

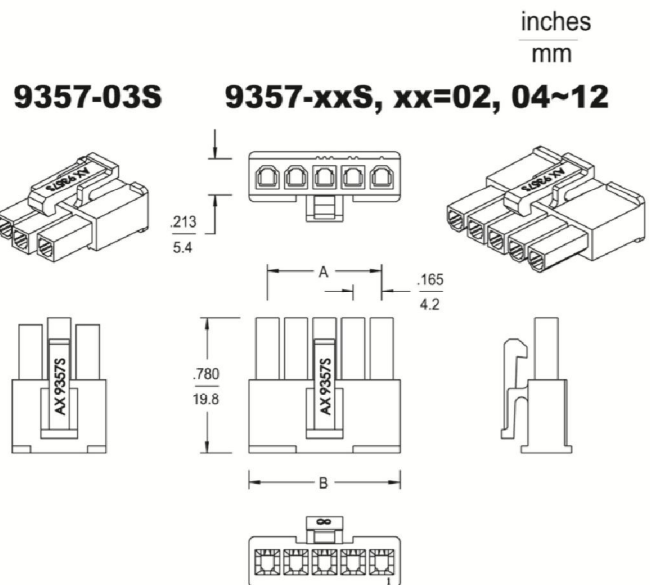
**ALEX**

## .165"(4.2mm) Single Row Connection System

### 9357-xxS

#### Receptacle Housing

- 2 ~ 12 circuits available
- Material: UL 94V-2 nylon 66
- Accepts ALEX 4256T terminal
- Mates with ALEX 9358-xxS housing
- Mates with ALEX 9359-xxS, 9360-xxS headers
- UL file No.: E114003



#### Dimensional Information - ( mm ) 9357-xxS / 9358-xxS

Circuits	Dim. A	Dim. B	Dim. C
N	$4.2 \times (N - 1)$	$4.2 \times N + 1.2$	$4.2 \times N + 6.6$

&& N = 2 ~ 12

### 9358-xxS

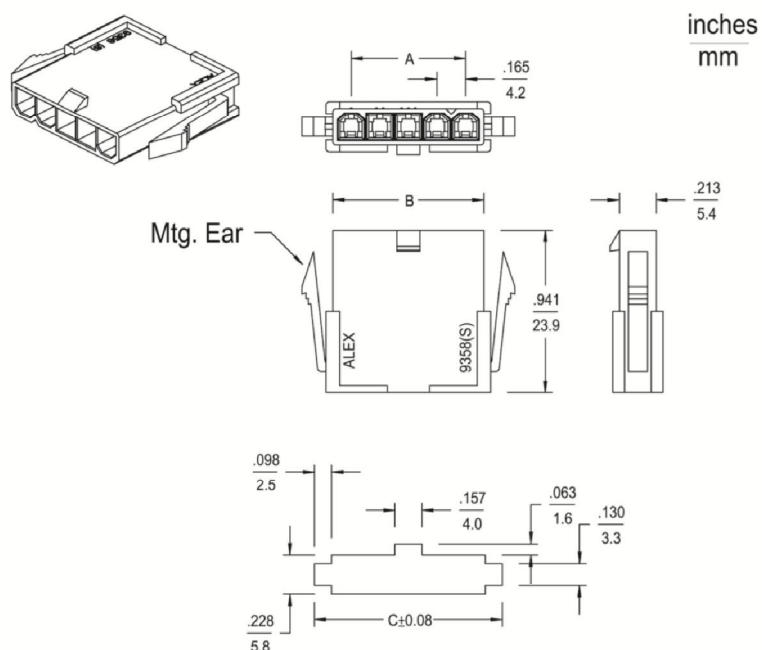
#### Plug Housing

- 2 ~ 12 circuits available
- Material: UL 94V-2 nylon 66
- Accepts ALEX 4257T series terminals
- Mates with ALEX 9357-xxS housing
- UL file No.: E114003

#### Ordering Information

Part No.	Feature
9358-xxSE	With Mtg. Ears
9358-xxS	Without Mtg. Ears

&& xx = 02 ~ 12



Panel cutout ( Max. panel thickness: .079"(2.0mm) )